



HAVOC
SERIES

CUSTOM BODY

WILL FIT YAMAHA® DRIVE®

INSTALLATION INSTRUCTIONS

Body Kits Include:

- Front Cowl
- Rear Body Cowl
- Automotive Style Mount LED Headlights/ Taillights
- High Gloss Clear Coat Finish



V.3

HAVOC CUSTOM BODY INCLUDES



Cowl with Off-Road Fascia

-OR-



Cowl with Street Fascia



LED Headlights



LED Taillights



Front Cowl Brackets



Bumper Extension
(for Street Fascia)
Part# 03-117



Strut Covers



Hood Vents (Sold Separately)
Part# 05-086



Havoc Harness



Chrome Grill
Part# 05-088



Black Grill
Part# 05-082

1
Switch key to OFF position. Place TOW/RUN switch to TOW. It is not required to remove the batteries but you do need to disconnect the main negative. Remove canopy, rubber strut cover and front struts. Retain hardware.



2
Remove floor mat. Remove screws from console. Retain hardware.

3
Remove console. Be sure to remove forward and reverse switch, key switch and all accessories. Retain all.

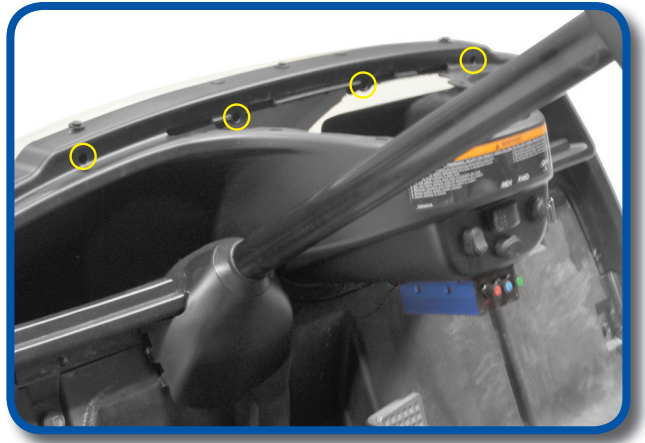


4
Remove 5 pins as shown to remove dash and cowl support. Retain all.



5

Remove 4 screws from dash and retain.



6

Remove 5 pins from front cowl and retain.

7

Remove one pin from steering column cover.
Remove dash. Retain all.



8

Remove screw from inside front cowl.

Remove screw from each side of cowl and retain.



Remove cowl.

HARNESS INSTALLATION

Lift plate from floor to show pedal assembly.

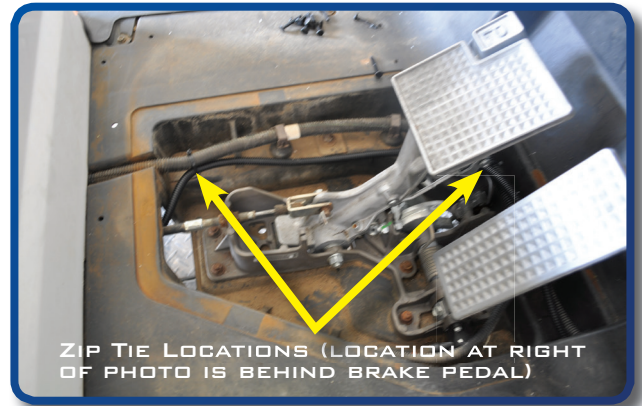


Route wiring harness through pedal assembly area to areas for headlights and tail lights. Route wiring harness through dash to mount headlight rocker switch.

IMPORTANT: Route wiring harness in such a way to prevent it rubbing against or being pinched by moving parts (e.g., suspension). When routing the harness to the rear of the vehicle, tuck the harness into the routing well that runs into the battery compartment and use opening in the front of the battery compartment.

Secure the wiring harness to vehicle's main wiring harness in pedal assembly area using the supplied zip ties as shown.

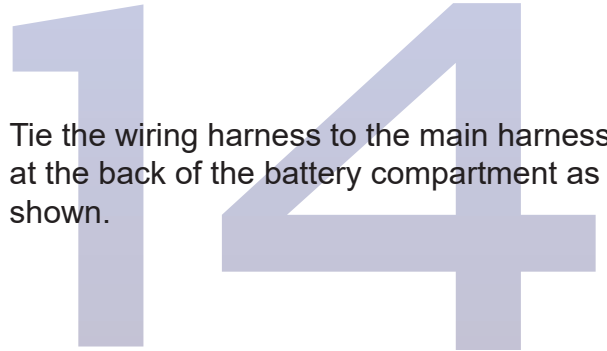
IMPORTANT: Fasten the wiring harness to frame members in the front of the vehicle in order to prevent the harness from making contact, rubbing, or being pinched by moving parts, such as the suspension.



ZIP TIE LOCATIONS (LOCATION AT RIGHT OF PHOTO IS BEHIND BRAKE PEDAL)



Tie the wiring harness to the main harness at the back of the battery compartment as shown.



Connect the wiring harness to the battery pack.

IMPORTANT: The cart's battery pack configuration will determine how the wiring harness is connected to the battery pack.

CAUTION: THIS LIGHT KIT IS A 12V SYSTEM. SUPPLYING MORE THAN 12V TO THE SYSTEM WILL DAMAGE THE LIGHT KIT AND VOID YOUR WARRANTY. DO NOT OVERLOAD.

For gas carts hook light kit directly to battery.

A voltage converter is the preferred method to hook up the light kit. Follow the instructions provided with the converter.

If your cart is equipped with **FOUR 12V** batteries, connect the wiring harness across one battery as shown below.

If your cart is equipped with **SIX 8V** batteries, you will need to use a 16V to 12V voltage reducer, we recommend the Madjax voltage reducer p/n MJ1612VR across 2 batteries. In this case, you will connect the voltage reducer across **TWO** of the 8V batteries, and then connect the wiring harness to the appropriate connections on the voltage reducer.

NOTE: Check connection to confirm 16 volts with a meter.



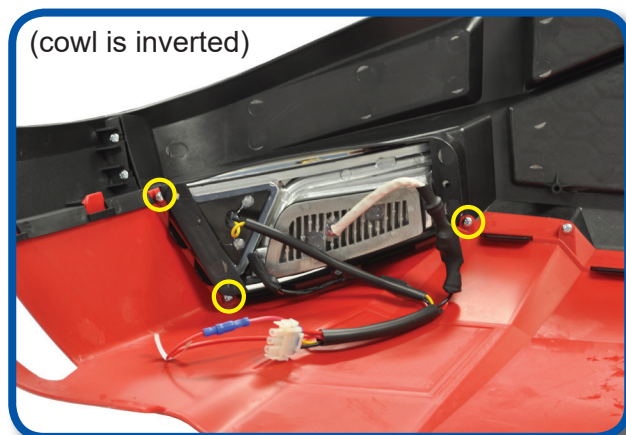
Yamaha® Drive® with 12V Battery Configuration

COWL ASSEMBLY

Note: Flip cowl over and place on a flat surface with a soft material between the two to avoid scratching.

Using hardware supplied with your headlights, insert 3 screws through back of cowl into headlight housing.

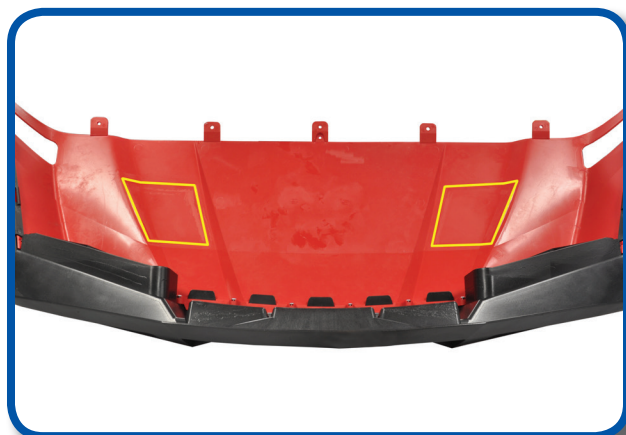
16



Note: If installing vents follow the next two steps, otherwise skip to step 19.

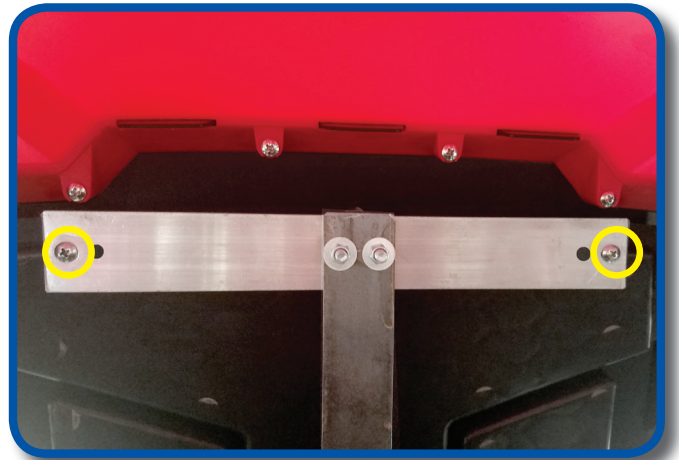
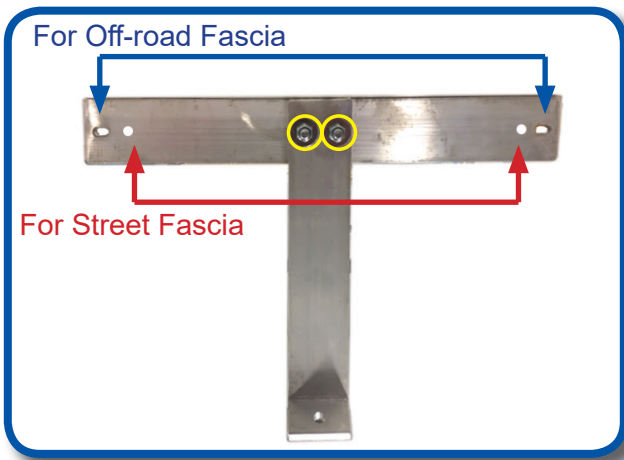
Using a cutting tool, locate the molded hood vent lines under the cowl. Follow outline to cut out vent holes.

17



Install vents by pushing them through to top of cowl. Vent tabs will snap in place once fully inserted.

18



19

Assemble cowl mounting bracket as shown using 6mmx25mm hardware from mounting bracket kit. Attach mounting bracket to cowl using the #2 Phillip's pancake head screws.

20

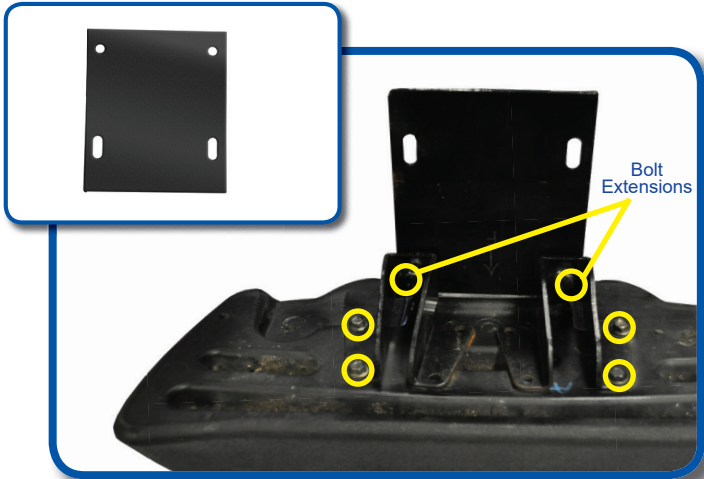
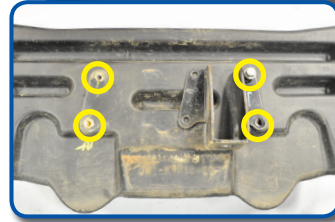
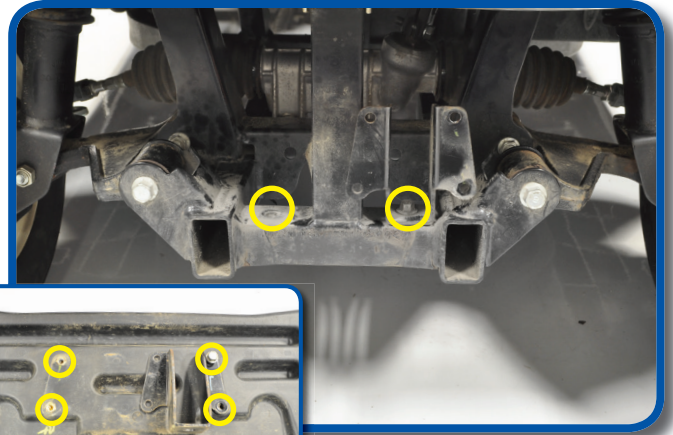
Attach cowl with mounting bracket to cart using remaining 6mmx25mm bolt and flat washer.



Bumper Extension For Street Fascia

To install the bumper extension (03-117), remove bumper and bumper mount brackets. Retain hardware.

1



Install bumper brackets to bumper with retained hardware bolt extensions to bumper brackets using hardware provided with extensions.

2

Using provided hardware install the bolts into the bracket, then into the frame from bottom to top.

3

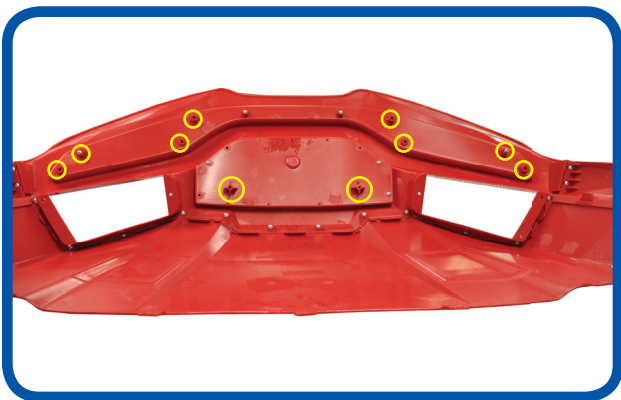


Bumper Extension Installation Complete

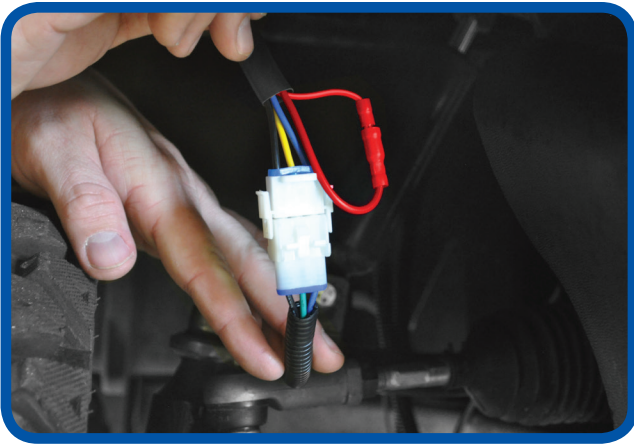
GRILL INSERT INSTALLATION



Insert grill pieces into fascia.



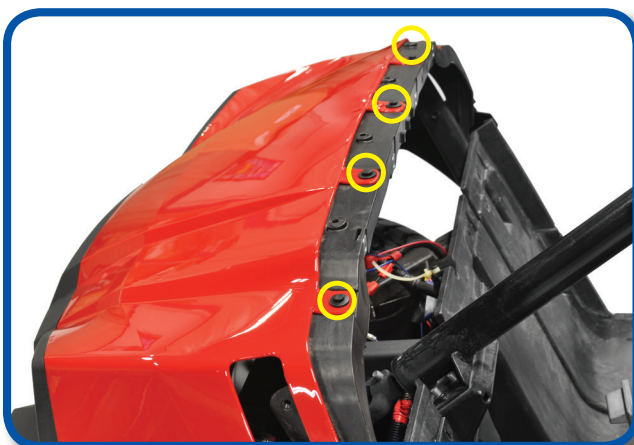
Flip cowl over on a flat surface with a soft material between the two to avoid scratching. Install screws provided with grill inserts using a Phillips screw driver.



If you are going to use the daytime running light feature unplug the red wire from blue bullet connector on both headlights wires and connect red wires to switched 12 Volt output of voltage converter.

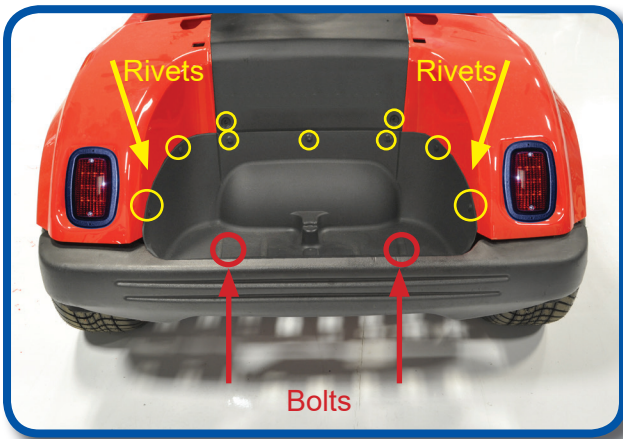
NOTE: 48 Volt carts will require a voltage converter. 12v car wire to switched power.

Route wiring harness on top rear fender wells. Connect tail light to wiring harness and to the tail light locations and mount to the body using supplied zip ties. Tie the wiring harness to the main harness at the back of the battery compartment as shown.

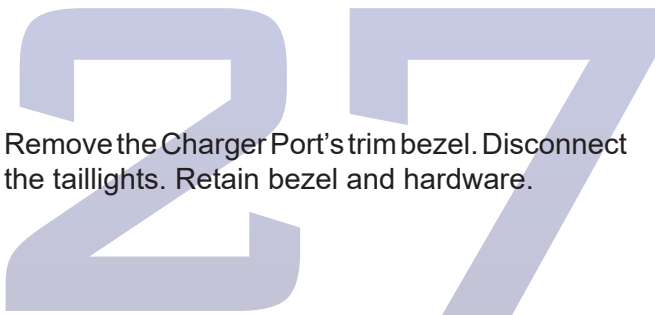


Attach cowl to upper dash mount by inserting push pins into brow as shown. Reinstall console, floor mat, canopy and front struts using new strut covers in place of OEM and retained hardware.

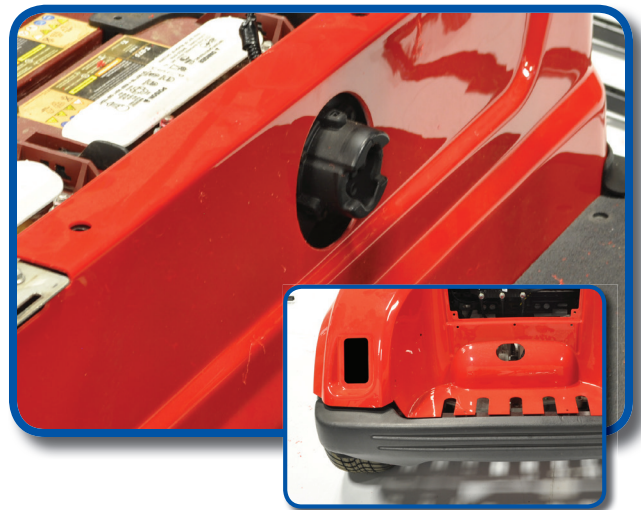
REAR BODY TEARDOWN



Remove Front Seat and Rear Seat. Loosen OEM Body by removing 11 plastic rivets and 2 bolts. Retain all hardware.



Remove the Charger Port's trim bezel. Disconnect the taillights. Retain bezel and hardware.

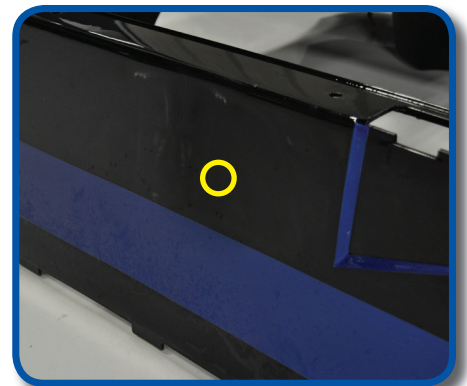
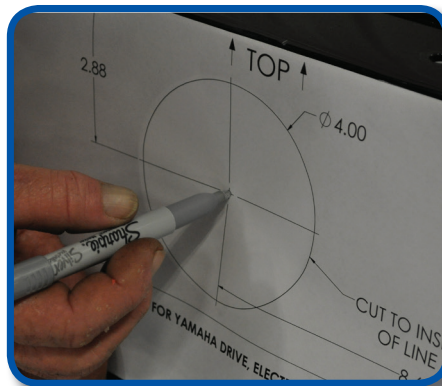
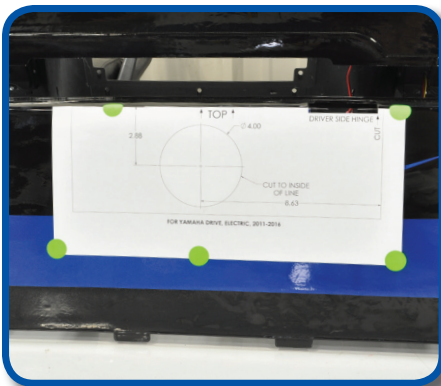


Now that the body is free, remove the rear body.

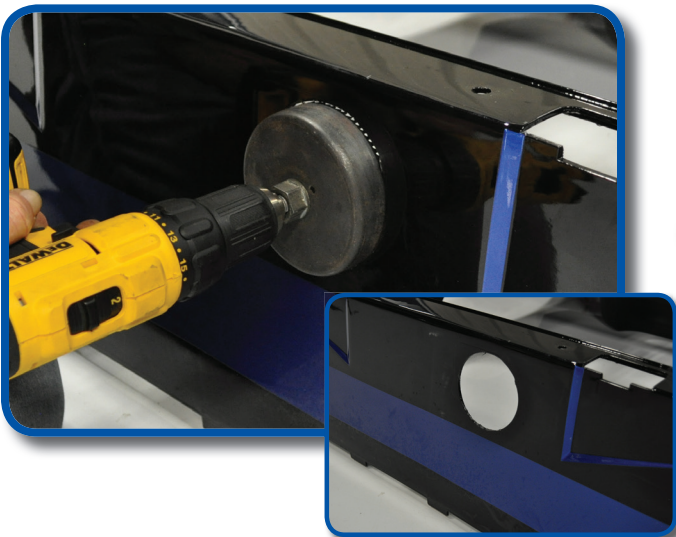
NOTE: Add 02-006 for the Madjax Ultimate Upgrade for turn signals, brake lights and horn. Passenger lights have a red 4-pin connector.

REAR BODY

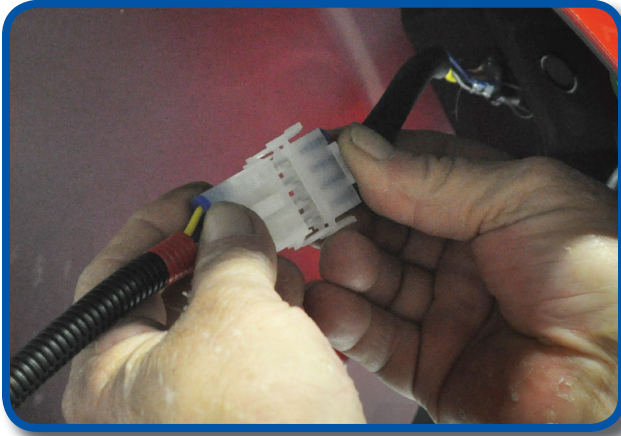
To install Havoc taillights put the red light on the inside of the rear body and put the bezel on the outside. Push together and fasten with provided hardware.



Choose template provided that matches your charger port or shift lever (for gas), line up the driver side hinge and mark the cowl through the center of the circle.

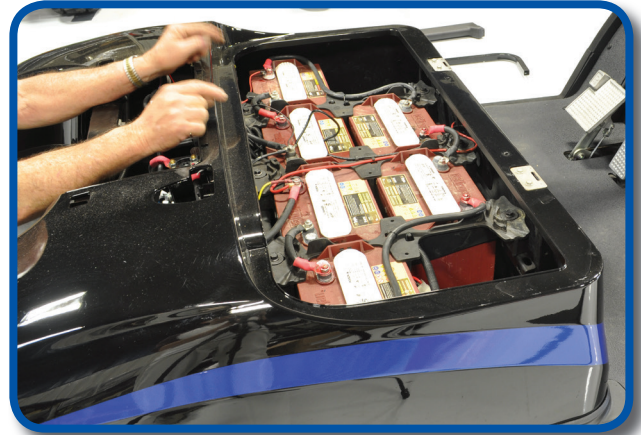


Using the appropriate hole saw or bits to match your configuration cut out charger port or shifter holes.



While placing the body on the cart connect taillights to Havoc Wiring harness.

32



After connecting rear taillights adjust the rear body onto cart.

33



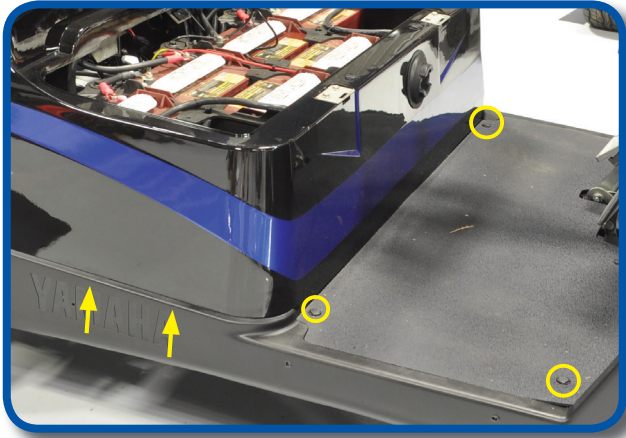
Once body is into position, reattach the retained plastic rivets at the battery box. Once this side is done, repeat process on other side.

34



Renstall Bagwell cover with retained plastic rivets and 2 bolts.

35



Reinstall Floormat and tighten sideskirt.

36

Reattach all factory seats, top, struts, etc.

37



INSTALLATION COMPLETE

Yamaha®, Yamaha® Drive®, G-14®, G-16®, G-19®, and G-22® are registered trademarks of Yamaha Golf-Car Company ("Yamaha"). Reference to Yamaha®, Yamaha® Drive®, any of the G-Series of Golf Carts, or any of Yamaha's trademarks, word marks, or products is only for purposes of identifying golf carts with which this Madjax product is compatible. Madjax products are aftermarket parts and are not original equipment parts. Madjax is not connected to, affiliated with, sponsored by, or endorsed by Yamaha or any of its parent or subsidiary companies.

